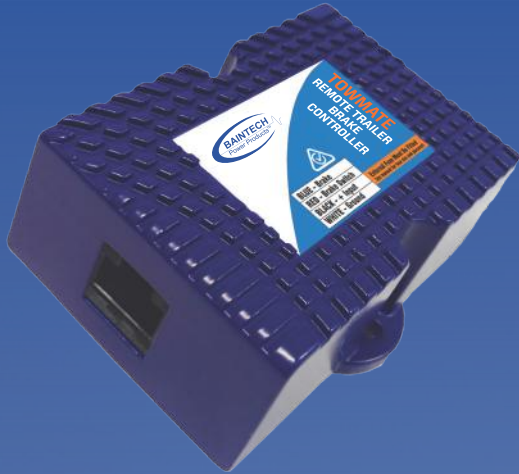




# TOW MATE

## REMOTE TRAILER BRAKE CONTROLLER



The Baintech Tow Mate operates with a pre-set braking force utilising microprocessor technology. This new generation of brake controllers has been designed for both single and dual axle trailers using negative earth (ground) systems only.

Rugged and compact, it is easily installed with the simple connection of four wires and comes with a remote control. The remote control is simple to install and makes adjusting and monitoring the brakes even easier - it can be located up to 1m from the brake controller. The Tow-Mate incorporates an override function for independent braking of the trailer from the vehicle brakes – which helps to prevent potentially dangerous swaying and snaking.



**Small, easy mount  
remote head  
(20mm x 31mm)**



**1 x  
Single hole install**



**Single multi  
function knob**



**Unlimited mounting  
angles**

### **SPECIFICATIONS** Code: *BTTOW*

Voltage Range	9 - 15VDC
Suitable for 12V Trailer Brakes	Yes
No Current Load	30 mA
Maximum Load	2 Axle / 12A Avg
Dimensions	30mm x 57mm x 90mm
Weight	200g

- **Compact**
- **Remote control**
- **Safe**
- **Easy to install**
- **Approved for use with AL-KO ESC**



Phone: 1300 224 683 email: [sales@baintech.com.au](mailto:sales@baintech.com.au)  
[www.baintech.com.au](http://www.baintech.com.au)

