

### 4G LTE

STATUS INDICATOR LEGEND

- Boosting 3G
- Boosting 4G LTE
- Error\*

AUTO 3G 4G LTE

### 4G/4GX

STATUS INDICATOR LEGEND

- Boosting 3G
- Boosting 4G/4GX
- Error\*

AUTO 3G 4G/4GX

(\*NOTE: if Error, go to troubleshooting at [cel-fi.com/support](http://cel-fi.com/support))

Press the **MODE** button on the unit to select desired scanning mode. Status Indicator will blink during the setup process, and may take a few minutes to complete.

(OPTIONAL: use your smartphone to select mode. Download the **Cel-Fi WAVE app**, and follow the on-screen instructions.)



## 7 Tips & Tricks

- Keep **Donor** and **Service Antennas** separated/isolated from each other for best performance
- For best performance, the cable between the **Donor Antenna** and GO unit should be as short as possible
- Use sealant if any connections are exposed to elements

## 8 Cel-Fi WAVE

For more **Cel-Fi GO** features, go to **App Store** or **Google play** and download the mobile **Cel-Fi WAVE app**.

(NOTE: If you do not have a compatible smartphone, go to [cel-fi.com/wave](http://cel-fi.com/wave) to download the Desktop app.)

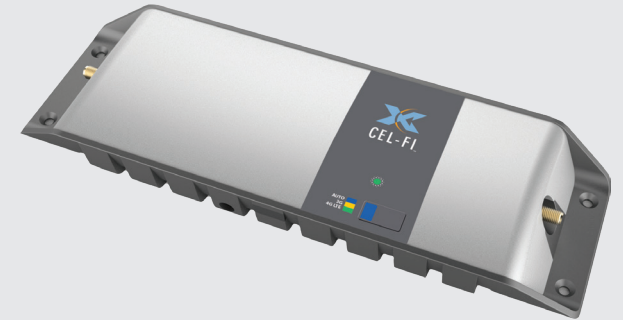
The Cel-Fi WAVE app can help you optimize your system's performance.



Copyright © 2019 by Nextivity, Inc, U.S. Patents pending. All rights reserved. The Nextivity and Cel-Fi logos are registered trademarks of Nextivity Inc. All other trademarks or registered trademarks listed belong to their respective owners. Designed by Nextivity Inc in California. qsg\_go-mobile-pt-aus\_19-1106

# Cel-Fi GO Mobile Quick Start Guide

## Smart Signal Repeater



**Cel-Fi GO Mobile** is an evolved **cellular smart signal repeater** design that can amplify cellular signals up to 100dB. Connect a single **Donor Antenna** to receive the macro-network signals, and then a single indoor **Service Antenna** where you need service, and **Cel-Fi GO** will do the rest automatically.

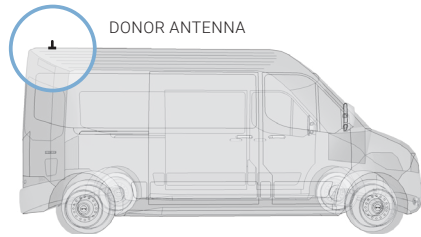
- ### IN THE BOX
- Quick Start Guide
  - Smart Signal Booster
  - Power Supply
  - Legal Insert

For more information, visit: [www.cel-fi.com](http://www.cel-fi.com)




# Cel-Fi GO Mobile Installation

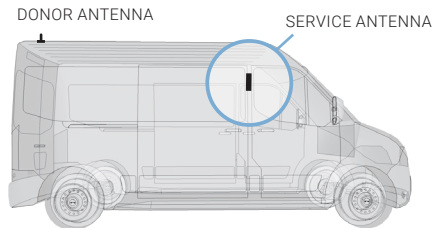
## 1 Install Donor Antenna



Mount your **Donor Antenna** on the exterior of the vehicle, towards the rear, according to its design, and the type of vehicle it's being used with. Make sure you consider the cable connection to the **Cel-Fi GO** unit with your location choice.

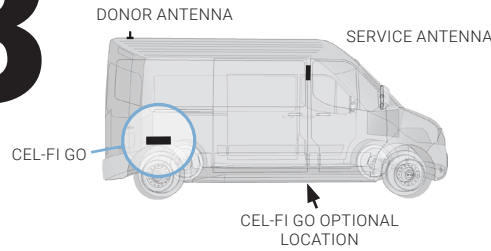
 For best performance make sure there is 50cm of metal around the base of the antenna.

## 2 Install Service Antenna



Install **Service Antenna** in the cab, towards the front, where coverage is needed. Ideally, there should be substantial material, like the metal of the roof, between the **Donor** and **Service Antennas**, to improve isolation.


## 3 Mount Cel-Fi GO



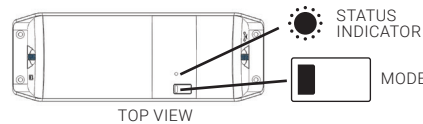
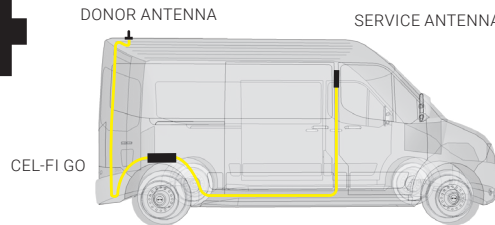
Find a good mounting location in your vehicle. Location should have airflow and be secure from contact with external objects.

Make sure the unit is within cable range of the 12V power supply on your vehicle.

Best to make sure all cable lengths support the intended mounting location BEFORE permanent mounting.

 **DO NOT** plug in at this time.

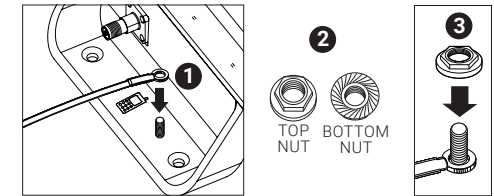
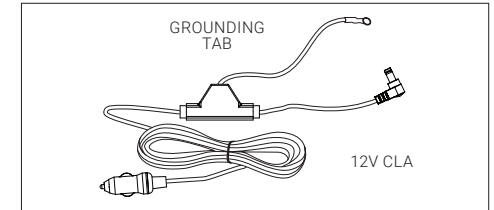
## 4 Connect Donor & Service Antennas to the Cel-Fi GO Unit



## 5 Ground the Cel-Fi GO

If your unit has a 12V CLA with a grounding tab on the end, then:

- (1) attach that tab to the **grounding post\*** on the Cel-Fi GO prior to attaching to power.
- (2) Use the nut (*included*)
- (3) to secure the tab to the unit.



\* If your **Cel-Fi GO** unit does not include a grounding post, simply attach the grounding tab to any available ground source.

