



Invicta Hybrid Starter Range

The Invicta Hybrid Starter series offers a dual purpose solution for those that require high CCA starting power but also deep cycle performance that keeps energy flowing. Featuring a built-in jump-start feature, smart BMS protection and under-bonnet installation capabilities, the Invicta Hybrid Starter range is the perfect solution for automotive, marine, 4WD and caravan applications.

With conveniently designed case sizing to easily replace your existing AGM or starter battery, and the utilisation of Lithium Iron Phosphate (LiFePO4) technology, one of the highest performing and safest lithium chemistries. Our hybrid solution will have you doing more of what you love with faster recharge time, greater runtime and up to 50% less weight, compared to AGM equivalent.

Features and Benefits

Invicta Hybrid Starter

- 3-year full replacement warranty
- Drop-in starter battery replacement
- Light weight LiFePO4 chemistry
- Engineered BMS for high continuous charge/discharge
- Pouch cell design for high rate charge/discharge flexibility
- Jump start feature
- High CCA capabilities
- Charge directly from alternator
- Standard automotive case sizes
- Heat resistant technology for high-heat applications
- IP 56 Rated
- IEC Certified



Scan me for information on the full range or visit invictalithium.com.au

Charge From Car Alternator
Jump Start Feature

Heat Resistant Design
High CCA Capability



Heat Resistant Technology

To reduce the impact of heat on the internals, the battery utilises a specially designed thermal protection layer. This ensures that the internal temperature of the battery is much cooler than the external temperature. Allowing it to withstand higher temperatures compared to other lithium batteries, especially when placed under bonnet.

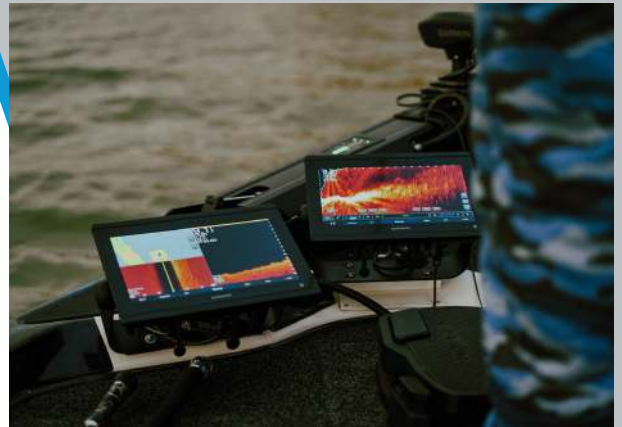
Charging and Discharging Flexibility

Lithium pouch cells are the cell type of choice for the hybrid starter range due to their inherent ability to discharge at a high-rate and charging flexibility. This allows the battery to be charged directly from the vehicle alternator or used as a starting battery that requires high Cold Cranking Amps.

When To Use The Invicta Hybrid Starter

The Invicta Hybrid Starter is your best option when you require a high-rate of discharge, such as starting an engine or winching, but also have deep-cycling requirements. This could be a boat that requires power to start the engine but you would also like to run your sounder and other boating appliances. In a 4WD you could replace your current Lead Acid starting battery and utilise the extra energy to run your fridge. With our top performing battery you could even power your winch.

For applications that are larger or off-grid in nature, requiring more amps and overall energy we would suggest looking at our Invicta core range that is dedicated to deep-cycling only.



The Invicta Hybrid Starter Range

| Part Number | Features | Nominal Voltage | Nominal Capacity (AH) | Terminal | Length (mm) | Width (mm) | Height (mm) | Weight (KG) | Max Discharge Current (A) | CCA |
|-------------|--------------------------|-----------------|-----------------------|----------|-------------|------------|-------------|-------------|---------------------------|------|
| SNLH80D | Jump start functionality | 12.8 | 60 | M8 | 260 | 172 | 203/244 | 7.9 | 200 | 1000 |
| SNLHLN3 | Jump start functionality | 12.8 | 60 | SAE | 278 | 174 | 190 | 7.9 | 200 | 1000 |
| SNLH95D | Jump start functionality | 12.8 | 80 | M8 | 305 | 172 | 203/244 | 10.2 | 200 | 1200 |
| SNLH31H | Jump start functionality | 12.8 | 100 | M8 | 330 | 168 | 220/222 | 10.2 | 200 | 1200 |
| SNLHMAX | Jump start functionality | 12.8 | 80 | M8 | 306 | 168 | 211 | 10.3 | 800 | 1400 |