

PREMIUM ELECTRIC DOOR STEP



The ultimate doorstep that automatically extends and retracts as you open and close your door.

Elevate your caravan adventure with the Aussie Traveller Premium Electric Doorstep. Carefully crafted to enhance your travel experience, this step is designed to add a touch of luxury to your journey. The step automatically extends open when you open the door, eliminating the need to search for the switch or manually extend the step when entering or exiting your RV.

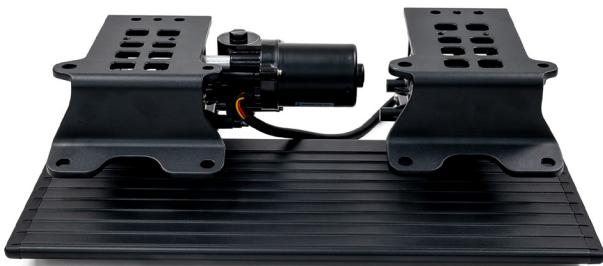
The Premium Electric Doorstep combines durability with a sophisticated matte black finish and will endure the adventurous lifestyle of all caravans as well as looking great on your van too. For added versatility the step can also be wired with a switch for full control on how you use the step.

The Premium Electric Doorstep is made from high-quality materials and is sure to last for years to come.

FEATURES

- Sleek matte black finish
- Automatically extends when caravan door is opened
- Strong & durable
- Compact when retracted
- Luxury level doorstep experience

PART NUMBER: 40900010001080



SPECIFICATIONS

DIMENSIONS (W×L)	230×550mm
MOTION SPELL	2.0S for the EDS extension from beginning to the fullest extent and 2.0S for the EDS retraction from beginning to the fullest extent
VOLTAGE	Normal Voltage: 12V; Work Voltage: 6-12V (EDS stops working if the voltage <9V or >16V)
ELECTRICAL CURRENT	Non-load current of the motor: 2A; Max Instantaneous Current ≤7A; Locked Rotor Current ≤30A
ANTI-PINCH FORCE	Protect users from being pinched as the EDS extends/retracts, with anti-pinch force ≤100N
DOOR STEP ENDURANCE	100,000 cycles of extension and retraction without anomaly
WORKING NOISE	Motor noise ≤50dB, overall noise ≤60dB
WORKING TEMP	Working temp range for EDS: -40°C to 85°C
STATIC BEARING CAPACITY	Greater than 280kg
MOTOR PROTECTION GRADE	Protection Grade: IP67
VEHICLE COMMUNICATION INTERFACE	Communication Interface: CAN/LIN
SURFACE SPRAYING	Salt Spray Test for over 720h and no surface corrosion detected
H/L TEMP ENDURANCE	The machine could still perform the two states(extension/retraction) over 100 times respectively after being placed in an environment with a temp of -40°C for 40 hours, and then heated the environment to (+23±3) °C and kept it there for 4 hours.
H/L TEMP SHOCK	The machine managed to demonstrate a smooth cycle of extension and retraction, and qualified anti-pinch force and the noise level;

