



Sunburst Classic Awning User Operating Instructions

1. ROLLOUT PROCEDURE - ALL TERRAIN POSITION

Step 1.

Unlock both arms from travel position (See Figure 1A). To open travel locks, swivel lock away from the arm of the awning (See Figure 1B).

Figure 1A



Figure 1B



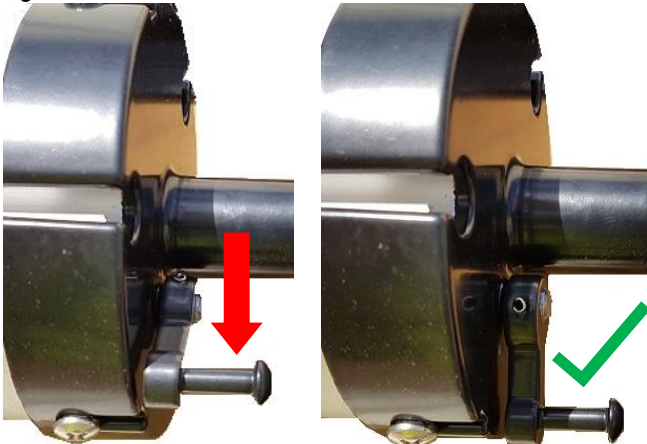
Step 2.

Loosen black rafter knobs located on back of BOTH rafters.

Step 3.

Locate Ratchet Lever behind right end of roller. Using pull down rod move lever downward (See Figure 2). (The Ratchet mechanism is functioning correctly if a clicking noise is heard when rolling the awning out or in.)

Figure 2



Step 4.

Insert pull rod through loop in pull strap and pull awning open until fully extended (See Figure 3).

Do not overextend roller.

****NB. See step B 6 overleaf.**

Figure 3



Step 5.

Slide the rafter up support arm until it locks into position over the black spring button. Tighten knob on rafter to tension fabric (See Figure 4 & 5). Repeat other arm.

Figure 4

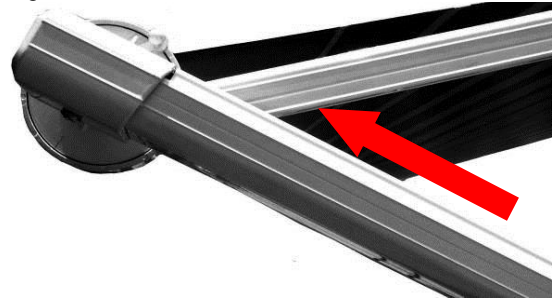


Figure 5



BRISBANE

11-15 Oasis Court, Clontarf, QLD 4019
Phone : 07 3284 3284 Fax : 07 3284 5969
E-mail : enquiries@aussietraveller.com.au

www.aussietraveller.com.au

MELBOURNE

235A Barry Road, Campbellfield VIC 3061
Ph: 03 9357 6565 Fx: 03 9357 6515
E-mail: info@aussietraveller.com.au

Step 6.

To raise awning:

- Swing trigger handle on Side of arm upward.
- Lift handle slightly and pull and hold trigger with index finger.
- Using handle lift awning half way up. Release trigger and let arm slide down slowly until trigger locks.
- Repeat other arm lifting awning all the way up.
- Go back to the first arm and lift all the way up.

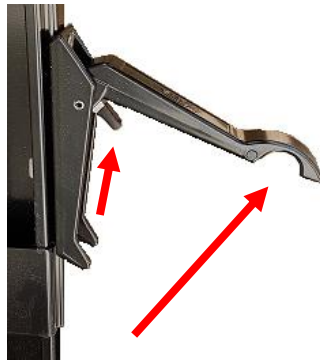


Figure 6

NOTE: In light rain conditions, lower one arm 300mm-600mm to allow water to drain from fabric to avoid water pooling. Not required if using Anti Flap Kits & Curved Roof Rafter's.

Step 7.

Curved Roof Rafter

- Fit hook end into the bracket underneath the awning track.
- Extend rafter out and slot the spigot end into the hole in the roller tube.
- Tighten the black locking knob.

RECOMMENDATION: The All Terrain position (support arms remain attached to R.V.) is stronger and more stable than Patio position and should be preferred when using the awning.

2. TO MOVE FRAMESET LEGS FROM ALL TERRAIN POSITION TO PATIO POSITION

Ensure that the Anti-Flap Kit and Curved Roof Rafters have been removed before attempting to move the frameset legs into the patio position.

NOT RECOMMENDED:

NOTE: FOR POP TOP CARAVANS

Because the awning rafter arm fits to the shoulder of the pop top caravan and not level with the fabric on the pop top, moving the arm from the All Terrain position to Patio position and back to All Terrain position must be executed correctly. If not executed correctly the action has the potential to damage both the ratchet mechanism and the top frameset mounting bracket on the pop-top shoulder.

Figure 7



Step 1.

Set up awning according to instructions for Rollout Procedure A.

Step 2.

Ensure rafter knobs shown in Figure 5 are very tight.

IMPORTANT: With awning roller parallel to ground move ratchet lever to down (roll out) position.

Step 3.

Depress latch on bottom bracket. Using lift handle swing arm away from R.V. until set in vertical position. (Do not pull trigger during this step.)

Step 4.

Adjust roller to desired height using trigger handle and trigger.

Step 5.

Secure bottom foot to ground by driving stakes (not provided) in crisscross manner (See Figure 8). Repeat other arm. Take care not to break foot casting.

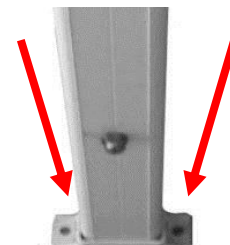


Figure 8

NOTE: Additional tie down straps are recommended. We have off the shelf products for this purpose; see Caravan Awning Rope Clips 05000020001000, also Tie Down Straps 36000010001080.s

Step 6.

When erected ensure the roller pull strap sail track is positioned at 9 o'clock (left end) as per drawing below. This will allow rain water to run off the fabric by minimising pooling behind the roller.

Reposition the roller as follows:

- Loosen black rafter knobs.
- Pull down and away from the vehicle to release pressure from the ratchet and move ratchet lever to the roll up position.
- Release the pressure on the pull strap and allow the roller to roll up until just past the 9 o'clock position. (See Figure 9)

BRISBANE

11-15 Oasis Court, Clontarf, QLD 4019
Phone : 07 3284 3284 Fax : 07 3284 5969
E-mail : enquiries@aussietraveller.com.au

www.aussietraveller.com.au

MELBOURNE

235A Barry Road, Campbellfield VIC 3061
Ph: 03 9357 6565 Fx: 03 9357 6515
E-mail: info@aussietraveller.com.au

100109A2/9

- d) Again, pull down and away on the pull strap.
- e) Check that the 9 o'clock position has been attained (See Figure 9). If not repeat above process. This then locks the roller against the ratchet.
- f) Continue to pull down on the strap/bottom leg (see all terrain position) to maintain fabric tightness and tighten black rafter knob.
- g) Move to other end of awning, pull down on pull strap/bottom leg and lock up black rafter knob.

Note: By leaving the ratchet in the roll in position the awning will not be able to roll out under wind pressure, but is relying only on the black rafter knobs to stop it rolling in. To assist the black rafter knobs and to give added strength against wind flap and water pooling the addition of an Anti-Flap Kit and Curved Roof Rafters is recommended.

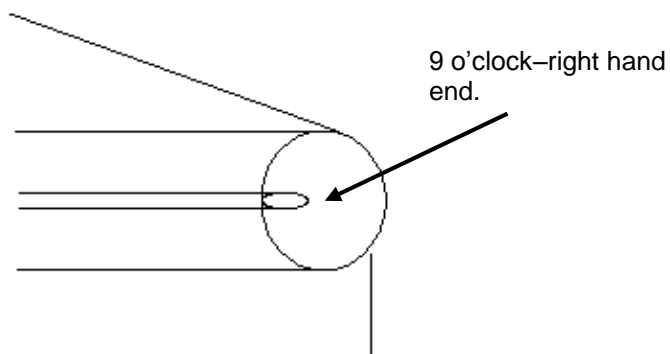


Figure 9

3. TO REPOSITION FRAMESET LEGS FROM PATIO POSITION BACK ONTO THE VAN/VEHICLE

Ensure that the Anti-Flap Kit and Curved Roof Rafters have been removed before attempting to reposition the frameset legs.

Step 1.

Pull stakes from bottom foot. Release ropes.

Step 2.

IMPORTANT: Commencing with the rear arm (with ratchet mechanism) loosen the knurl knob on the arm. The ratchet should be in the roll out position.

Step 3.

Use lift handle (do not pull trigger) to swing arm back to bottom bracket. Push support arm firmly into bottom bracket until latch automatically secures foot on bottom support arm (See Figure 10).

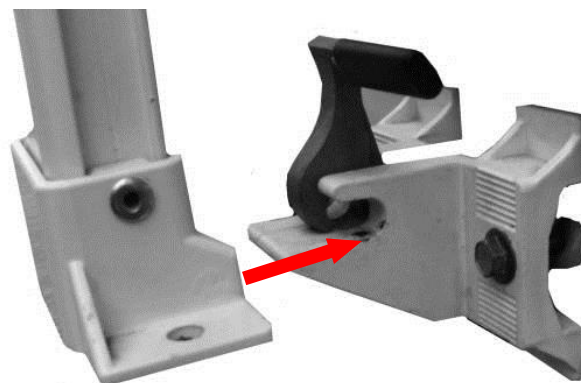


Figure 10

Step 4.

Repeat procedure on other end of awning.

4. ROLL UP PROCEDURE

Step 1.

Lower both right and left support arms to the dome nut position using the lift handle and trigger. Repeat set up procedure – lower one end 50% then the other fully and then the first one fully.

Step 2.

Loosen knob on rafter. Lower rafter by depressing lever on the outside of the frameset leg which will allow the slider to be released. Slide rafter to bottom of support arm. Repeat other rafter.



Outside of arm



Inside of arm

Step 3.

- a) Slide pull strap to the right until ratchet lever is within reach.
- b) Grasp pull strap, and by pulling out, release the pressure on the ratchet lever. Locate ratchet lever behind roller and rotate lever upwards and forward towards the front of the awning (See Figure 11).

BRISBANE

11-15 Oasis Court, Clontarf, QLD 4019
Phone : 07 3284 3284 Fax : 07 3284 5969
E-mail : enquiries@aussietraveller.com.au

www.aussietraveller.com.au

MELBOURNE

235A Barry Road, Campbellfield VIC 3061
Ph: 03 9357 6565 Fx: 03 9357 6515
E-mail: info@aussietraveller.com.au

I00109A319

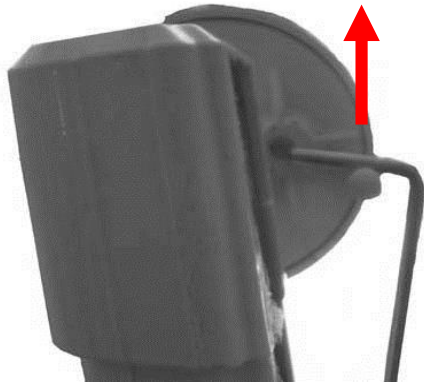


Figure 11

NOTE:

If ratchet lever is difficult to operate, use pull strap to rotate roller slightly as if to slacken fabric further. This reduces tension on mechanism and lever.

WARNING: To avoid damage to awning or R.V. DO NOT release ratchet lever without holding pull strap. The awning is under tension and will snap back against the vehicle.

Step 4.

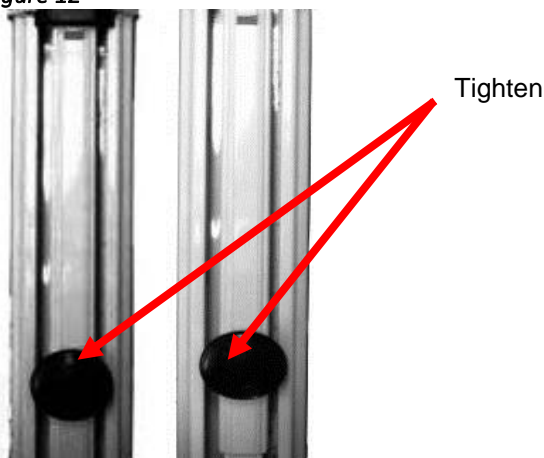
Slide pull strap more towards the centre of awning. Use pull strap to control speed of awning when rolling back towards R.V.

NOTE: To avoid creating a bulge in awning fabric allow strap to roll up diagonally side by side across roller and fabric.

Step 5.

- a) Lock both support arms in travel position. To lock squeeze rafter and top support arm together rotate travel locks behind rafters.
- b) Tighten black knobs (See Figure 12), (Opposite of Step 1 & 2 of Rollout Procedure).
- c) Ensure roller does not move when pull strap is given a slight tug. This confirms the ratchet mechanism is working correctly.

Figure 12



IMPORTANT NOTES

1. To avoid excessive force being exerted on ratchet mechanism do not remove support arm from bottom bracket until ratchet lever has been placed in down (roll out) position. Refer to label on support arm. Return ratchet lever to travel position when arm is replaced.
2. If the ratchet mechanism is subjected to excessive force the ratchet lever may become over tensioned and difficult to operate. To relieve the tension:
 - a) In roll up position: release right support arm from bottom bracket. Swing arm away from R.V. slightly until ratchet lever can be moved to open (roll out) position. Return support arm to bottom bracket.
 - b) In rolled out position: rotate roller slightly, as if to slacken fabric. Reverse ratchet lever. When releasing lever maintain your grip on pull strap, to prevent awning from snapping back against R.V.
3. CLOSE awning in strong winds or rain.
4. In light rain conditions, lower one arm 300mm-600mm to allow water to drain from fabric and avoid water pooling.
5. Damage to awning fabric, hardware and locking mechanism cause by wind or water pooling is NOT covered by warranty. **NEVER** leave awning rolled out when unattended.
6. Damage to awning fabric caused by extreme temperatures is not covered by warranty. (Never use awning in snow or freezing temperatures as fabric may crack or otherwise be adversely affected.)

PERIODIC MAINTENANCE:

- i) Lubricate control handles, lock buttons, locking knobs, support arms and rafter sliders with silicone or similar lubricant to ensure easy operation.
- ii) Check correct setting of adjustable stop bolts.
- iii) Ensure all rivets and screws in brackets are tight.

BRISBANE

11-15 Oasis Court, Clontarf, QLD 4019
 Phone : 07 3284 3284 Fax : 07 3284 5969
 E-mail : enquiries@aussietraveller.com.au

MELBOURNE

235A Barry Road, Campbellfield VIC 3061
 Ph: 03 9357 6565 Fx: 03 9357 6515
 E-mail: info@aussietraveller.com.au

GENERAL TIPS - DO'S

- i) Do keep your awnings clean. This is the best protection against mildew. Even on mildew resistant fabric, mildew can grow on accumulated dirt and eventually damage or stain the fabric.
- ii) Do wash down your awning. You can use a mild soap and water solution, or an approved vinyl cleaner, brushing lightly with a cloth or soft brush. Rinse thoroughly and allow drying prior to storage. We recommend doing this on a hot, sunny day.
- iii) Do keep the underside of your awning clean by simply brushing with a clean household broom. It may also be washed in the same manner as the top.
- iv) Do lower one arm 300mm-600mm in light rain conditions to allow water to drain from the fabric and avoid water pooling.
- v) Accessories such as Aussie Traveller's Anti Flap Kit and Curved Roof Rafters will help eliminate wind flap and water pooling.
- vi) When adding walls we recommend Aussie Traveller's Anti Flap Kit with built in wall attachment system.

GENERAL TIPS - DO NOT'S

- i) DO NOT operate awning in strong winds or rain.
- ii) DO NOT allow awning to snap closed excessively hard.
- iii) DO NOT remove support arm from bracket until ratchet lever has been placed in up (roll in) position. Refer to previous instructions.
- iv) DO NOT overextend awning when rolling out.
- v) DO NOT fold or roll out in extreme cold temperatures.
- vi) DO NOT get insect spray on the vinyl fabric, as some solutions may cause staining or discolour.
- vii) DO NOT allow water to collect on awnings, causing water pooling.
- viii) DO NOT overlook small rips or tears. Have them repaired or separation will result.
- ix) DO NOT wash your awning with truck wash or a harsh strong solution, or with an abrasive cleaner.
- x) DO NOT BBQ, grill or have campfires underneath the awning.
- xi) DO NOT store awnings when damp, or wet. Mildew may grow on the surface of a damp awning and permanently stain the fabric.
[If it is necessary to roll the awning away wet then roll out and dry at the first opportunity.]
- xii) DO NOT permit leaves, twigs, etc. to remain on your awning.
- xiii) Do not use a high pressure cleaning jet.

BRISBANE

11-15 Oasis Court, Clontarf, QLD 4019
Phone : 07 3284 3284 Fax : 07 3284 5969
E-mail : enquiries@aussietraveller.com.au

www.aussietraveller.com.au

MELBOURNE

235A Barry Road, Campbellfield VIC 3061
Ph: 03 9357 6565 Fx: 03 9357 6515
E-mail: info@aussietraveller.com.au

I00109A5/9

Curved Roof Rafter Operation Instructions

Thank you for purchasing our Sunburst Classic Awning. To assist you in damage prevention to your new awning Aussie Traveller has provided a Curved Roof Rafter free of charge.

Made to our exclusive design curve and shape the Curved Roof Rafter (CRR) was developed to help overcome two of the problems users of roll out awnings face.

1. It helps prevent wind flap in the fabric of the awning,
2. It reduces water retention in rain.

The Curved Roof Rafter is particularly effective when used in conjunction with our Anti Flap Kit, with or without the addition of walls.



Rafter retracted for travel, undo the knob to extend out.



Fit hook end into wall bracket fixed to side of van.



Extend out front telescopic section and fit spigot tip into hole in roller tube.



Shows Curved Roof Rafter in position.

SUGGESTED USAGE

<u>Awning Size</u>	<u>Number of Rafters</u>
11' and under	1
12'	1 (2)
13'	2
14'	2
15'	2
16'	2
17'	2 (3)
18'	3
19'	3
20'	3
21'	3 (4)
22' and over	4

BRISBANE

11-15 Oasis Court, Clontarf, QLD 4019
Phone : 07 3284 3284 Fax : 07 3284 5969
E-mail : enquiries@aussietraveller.com.au

www.aussietraveller.com.au

MELBOURNE

235A Barry Road, Campbellfield VIC 3061
Ph: 03 9357 6565 Fx: 03 9357 6515
E-mail: info@aussietraveller.com.au

I00109A6/9

Sunburst Classic Trouble Shooting Guide

SYMPTOM	POSSIBLE CAUSE	SOLUTION
1. Fabric ripples or does not roll up evenly.	Fabric not aligned properly.	Pull fabric right or left at sailtrack and secure with screws.
2. Arms bind - not releasing evenly or not nesting properly when rolled up.	Top mounting bracket out of alignment.	a) Realign top mounting bracket until rafter is centred in top support arm b) Lubricate rafter bumper guide c) Ensure fabric is rolling up evenly.
3. Unable or difficult to release Ratchet mechanism to roll up awning.	Awning may be over extended.	Reduce spring tension on roller pulling down on pull strap or rotating roller by hand. Lever can now be moved to roll up position. Refer to 'important notes' in operation instructions.
4. Ratchet mechanism jammed in travel position.	Arm has been pulled away from unit without releasing Ratchet lever.	Remove arm from bottom mounting bracket, pull outward until tension is released on ratchet, move ratchet lever to unlocked position. Replace arm in bottom mounting bracket. Roll out awning.
5. Holes in fabric caused by centre rafter support cradle. (Not covered by warranty).	Centre rafter cradle top mounting bracket installed too high or protruding too far out from van wall in comparison to awning mount position.	Flex roller downward as if to simulate rough road conditions. Mount bracket accordingly. Pack out mounting points on awning frameset arms.
6. Awning will not roll up completely.	a) Rafter knobs tight. b) Springs have lost tension.	Loosen knobs. Add turns to roller springs.
7. Roller will not lock when rolling down or at top.	Ratchet lever not fully engaged.	Ensure ratchet lever has moved fully into position.
8. Foot will not engage easily in bottom mounting bracket.	Bottom mounting bracket not aligned.	Check vertical and horizontal alignment of bottom mounting bracket.

BRISBANE

11-15 Oasis Court, Clontarf, QLD 4019
Phone : 07 3284 3284 Fax : 07 3284 5969
E-mail : enquiries@aussietraveller.com.au

www.aussietraveller.com.au

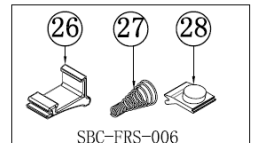
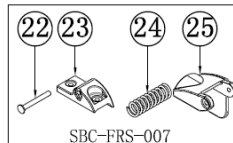
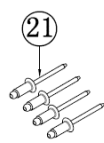
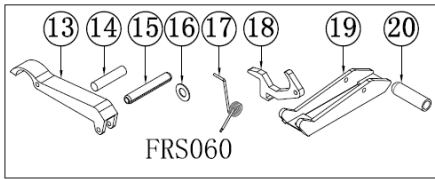
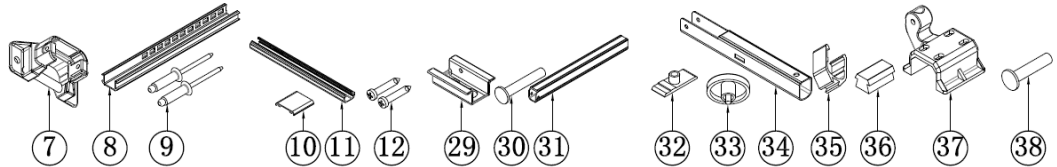
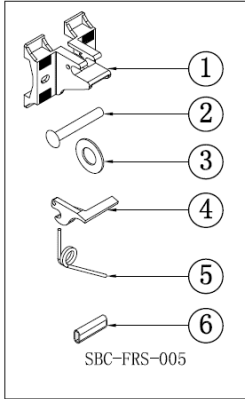
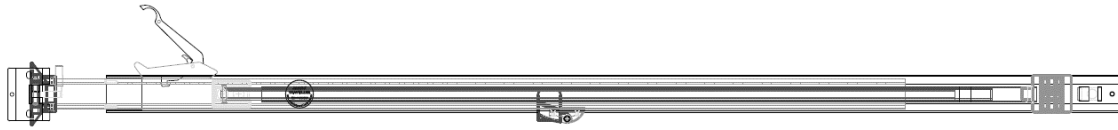
MELBOURNE

235A Barry Road, Campbellfield VIC 3061
Ph: 03 9357 6565 Fx: 03 9357 6515
E-mail: info@aussietraveller.com.au

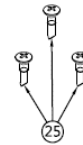
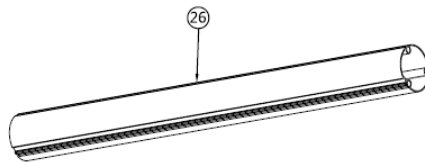
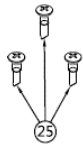
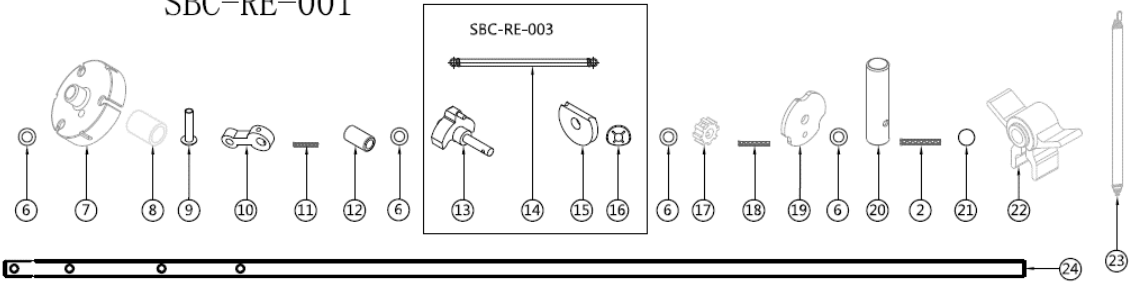
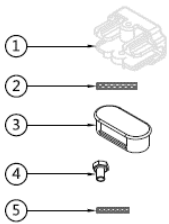
I00109A719

Sunburst Classic Awning

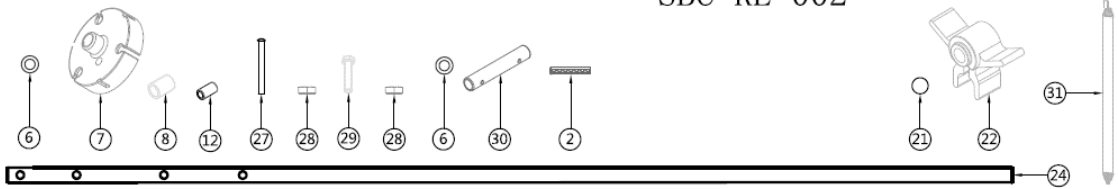
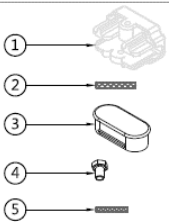
Exploded Parts Diagrams



SBC-RE-001



SBC-RE-002



BRISBANE

11-15 Oasis Court, Clontarf, QLD 4019
 Phone : 07 3284 3284 Fax : 07 3284 5969
 E-mail : enquiries@aussietraveller.com.au

www.aussietraveller.com.au

MELBOURNE

235A Barry Road, Campbellfield VIC 3061
 Ph: 03 9357 6565 Fx: 03 9357 6515
 E-mail: info@aussietraveller.com.au

I00109A8/9



AUSSIE TRAVELLER

Incorporated in Queensland A.C.N. 010 809 168 A.B.N. 81 010 809 168

12 MONTH WARRANTY SUNBURST CLASSIC

AND PROOF OF PURCHASE

CUSTOMER

NAME _____
ADDRESS _____
State _____ Post Code _____

Yes, my Sunburst Classic Awning & Curved Roof Rafter has been installed by an authorized Aussie Traveller Dealer and the awning and curved roof rafter are in satisfactory condition. My dealer has also given me full instruction on the use and maintenance of the awning and curved roof rafter.

Purchaser's Signature _____

DEALER

NAME _____
ADDRESS _____
State _____ Post Code _____

Yes, I have installed the purchaser's Sunburst Classic Awning & Curved Roof Rafter and it is in satisfactory condition. I have also given the purchaser instructions on the use and maintenance of the awning and the curved roof rafter.

Dealers Signature _____

Date of Installation _____

Date of Purchase (If Not Installed) _____

Size _____ Colour _____

SERIAL NUMBER

If Applicable

Aussie Traveller Pty Ltd
11-15 Oasis Court
Clontarf, Queensland, Australia
Telephone 07 3284 3284
Facsimile 07 3284 5969

PO Box 126
Clontarf Beach Qld 4019

BRISBANE
11-15 Oasis Court, Clontarf, QLD 4019
Phone : 07 3284 3284 Fax : 07 3284 5969
E-mail : enquiries@aussietraveller.com.au

www.aussietraveller.com.au

MELBOURNE
235A Barry Road, Campbellfield VIC 3061
Ph: 03 9357 6565 Fx: 03 9357 6515
E-mail: info@aussietraveller.com.au

12 MONTH WARRANTY

- A. Duration:** Aussie Traveller guarantees the awning for a period of 12 months from date of original purchase.
- B. Who receives this warranty?** The original purchaser only, and may not be assigned or transferred to subsequent owners.
- C. This warranty covers: Defects in materials or workmanship as follows:**
- The vinyl fabric is warranted against
 - Holes caused by mildew (Mildew will form on dust and dirt and stain fabric if fabric is not kept clean).
 - Excessive cracking, peeling, hardening or loss of strength while used under normal conditions.
 - Excessive fading (a slight colour change may occur due to ultraviolet rays).
 - All hardware components including roller are warranted not to bend or break if not subjected to high winds, water pooling or accidents.
- D. This warranty does not cover**
- Damage to fabric caused by storm, wind and rain. Stretching of fabric caused by water pooling on fabric.
 - Breakage or bending of hardware due to storm, wind, rain or water pooling on fabric.
 - Labour charges connected with installation of replacement or repaired parts.
 - Implied warranties including those of merchantability and fitness for a specific purpose are limited to 12 month from original purchase date. Liability for indirect or consequential expenses under any and all warranties is excluded. Under no circumstances shall Aussie Traveller be liable for any injury, loss or damage, direct or inconsequential, arising from use of the awning.
 - Any damage or failure due to accident, normal wear and tear, purchaser's neglect, improper maintenance or failure to use product in accordance with operation instructions provided with product.
 - Awnings not installed by an authorized Aussie Traveller dealer. Awnings not installed in accordance with installation instructions provided with product. Damage or failure due to parts left off during installation. Damages (holes, scrapes, abrasions) or failure caused by or during installation.
 - Freight expenses to and from Aussie Traveller in shipping defective and replacement parts.
 - Failure or damage that results from use of Aussie Traveller awnings in connection with any other product not specifically approved in writing by Aussie Traveller.
- E. Responsibilities of Aussie Traveller under this Warranty**
- Repair or replace defective parts at no charge within the first 12 months from original purchase date.
- F. Responsibilities of Purchaser**
- Complete warranty registrations forms and return to Aussie Traveller within 10 days of original purchase or show dated proof of purchase to qualify for any credits due under provisions for coverage.
 - Promptly notify seller or alternately Aussie Traveller of any claims.
 - Obtain a Return Authorisation Number from the seller or Aussie Traveller, and return product or part to an authorised Aussie Traveller distributor. NO returns will be accepted without a Return Authorisation Number.
 - All freight expenses to and from the Aussie Traveller distributor or Aussie Traveller.
 - All labour charges and travel costs connected with installation or replacement parts must be paid by purchaser.
 - In addition to returning defective parts as described above, Aussie Traveller at our discretion only, may ship parts to purchasers on a C.O.D. basis, payable by purchaser at full retail price. Upon determination by Aussie Traveller that the original parts are defective, Aussie Traveller will notify purchaser of such determination, and will issue appropriate credit to purchaser. (This option will minimize the period of time during which purchasers is unable to use original parts.)
 - Use reasonable care in maintenance, operation, use and storage of product in accordance with instruction contained in operation instruction.

Because of the difficulty in establishing the severity of weather, which an awning can stand up, Aussie Traveller does not cover any damage caused by weather. We have designed awnings to retract and be secured within seconds to avoid such circumstances. The purchaser should investigate insurance coverage when damage is caused by weather.

Please retain this portion for future reference

Serial Number: _____ Purchase Date: ____/____/____

Please Detach and Return to Aussie Traveller

