

Fitting Instructions



SKU

PRODUCT

T7F742

**TAG Heavy Duty Towbar to suit
Great Wall Cannon (09/2020 - on),
UTE (09/2020 - on)**



Scan for latest
version of these
instructions

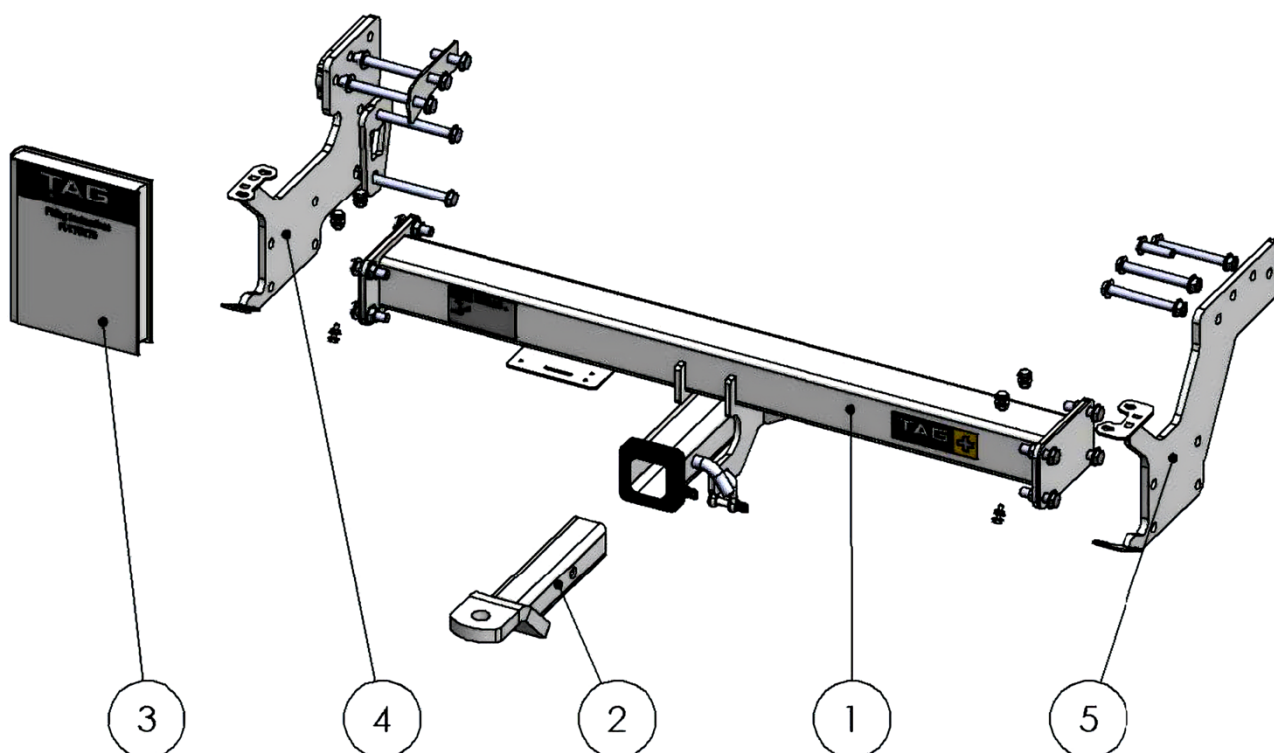
SPECIFICATIONS

- Towbar Class: Heavy Duty, Extended 3-Piece
- Towing Capacity: 3000kg

IN THIS GUIDE

- Fitment Instructions
- Torque Settings
- Warranty Info

Towbar Fitting Instructions

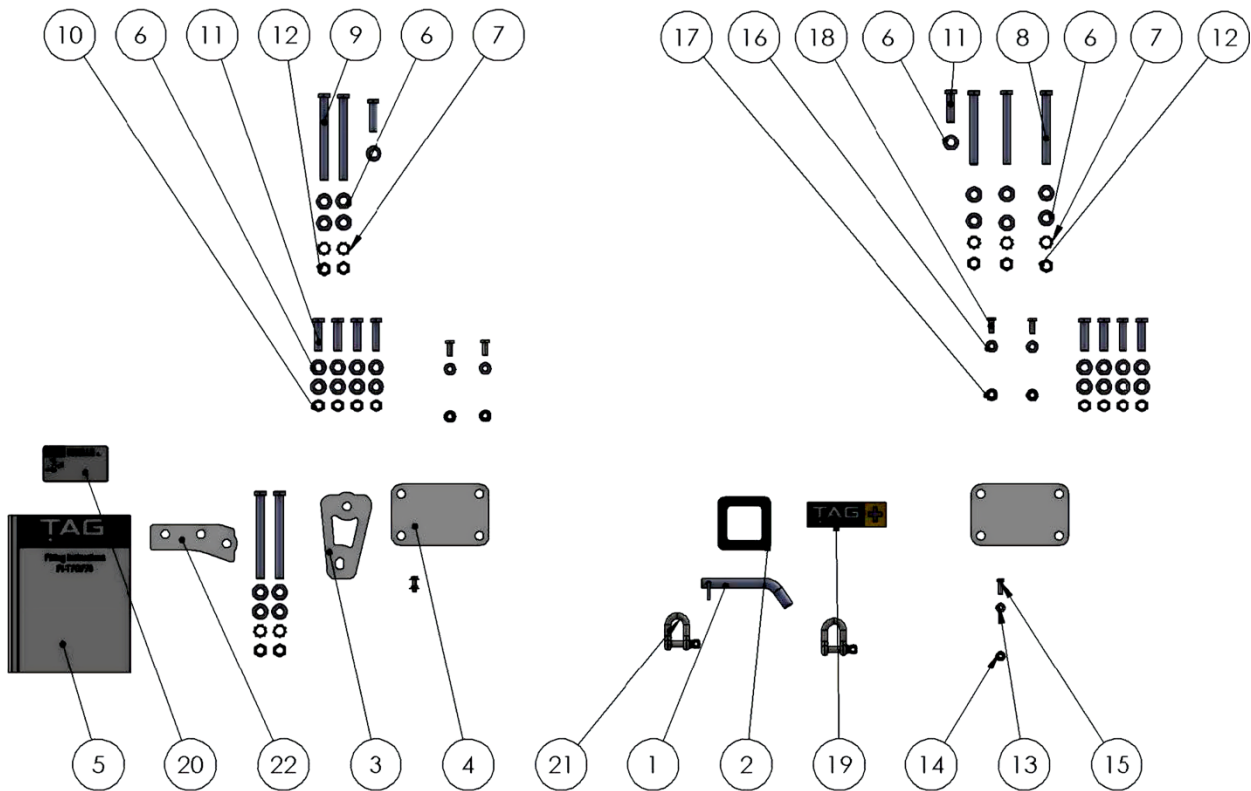


Tools Required: Spanners, Sockets, Torque wrench

ITEM NO.	DESCRIPTION	QTY.
1	T7G779 Welded Assembly	1
2	L4045 Ball Mount - Powder Coated	1
3	Fitting Kit for T7G779	1

ITEM NO.	DESCRIPTION	QTY.
4	End Plate Assembly PS	1
5	End Plate Assembly DS	1

Towbar Fitting Instructions



ITEM NO.	DESCRIPTION	QTY.	ITEM NO.	DESCRIPTION	QTY.
1	Class 4 Pin & Clip	1	12	M12x1.5 Nut	7
2	Cover Hitch Receiver Collar TAG	1	13	M6 FLAT WASHER FLAT ROUND ZINC CLEAR	2
3	End Plate Doubler - Lower PS	1	14	M6 x 1.00p Zinc Class 8 Hex Flange Serrated Nuts	2
4	End Plate spacer	2	15	M6X20 1 PITCH B/O GR8.8 METRIC THREAD ZINC CLEAR	2
5	Fitting Instruction	1	16	M8 FLAT WASHER FLAT ROUND ZINC CLEAR	4
6	M12 Flat Washer Zinc Clear	32	17	M8 NUT - HEX SERRATED FLANGE ZINC YELLOW	4
7	M12 Shakeproof Washer	7	18	M8x20 1.25Pitch B/O GR8.8 Metric Thread Zinc Clear	4
8	M12X110 1.5 PITCH GR8.8 B/O ZINC CLEAR HEX HEAD	3	19	TAG + Foil Sticker 123x38	1
9	M12X130 1.5 PITCH B/O GR8.8 ZINC CLEAR HEX HEAD	4	20	TAG Compliance plate	1
10	M12x1.25 Nut	8	21	TAG D-Shackle - 10mm, 1000kg, Galvanised	2
11	M12x1.25x45 Bolt	10	22	Upper Spacer - PS	1

Step-By-Step Instructions

Warning:

- This product is for towing purposes only and must only be loaded as shown in your vehicle Owner's Manual.
- This towbar is NOT to be drilled, cut, welded, or modified in any way.
- Check behind chassis rail and body panels before drilling to ensure no hazards are present
- All load ratings shown are under the assumption your trailer has a functional braking system installed
- When installed in positions other than the one depicted in these instructions the Tow Ball Mount may interfere or obstruct certain features of your vehicle (tailgate opening, Chassis clearance, etc.)

General:

- Before fitting this towbar read fitting instructions and check installation hardware is correct.
- Check that the towbar is suitable for the vehicle and be wary of any changes to the vehicle design that may conflict with the fitting of this towbar. (Tray, Canopy, Suspension etc.)
- After drilling, blow any filings clear, remove any swarf and treat exposed metal with a rust inhibitor.
- The high tensile fasteners supplied with this product are an integral feature to achieving the specified rating, if replacement is required ensure that fasteners of the same grade (8.8) & quality are used. Contact an authorised TAG distributor or the TAG fitment centre - (07) 3208 3022 - if further information is required.

Towbar Maintenance and Care:

It is recommended, when not in use, the Tow Ball Mount assembly and class 4 Pin and Clip is stored inside the car away from moisture to prevent standing water from forming rust. Inspect to ensure, on regular basis, fasteners are torqued to the specifications below and in good condition.

Ensure that the fitting instructions are read and understood prior to fitment

Place these instructions in the vehicle's glovebox after installation is completed

Towbar Fitting Instructions



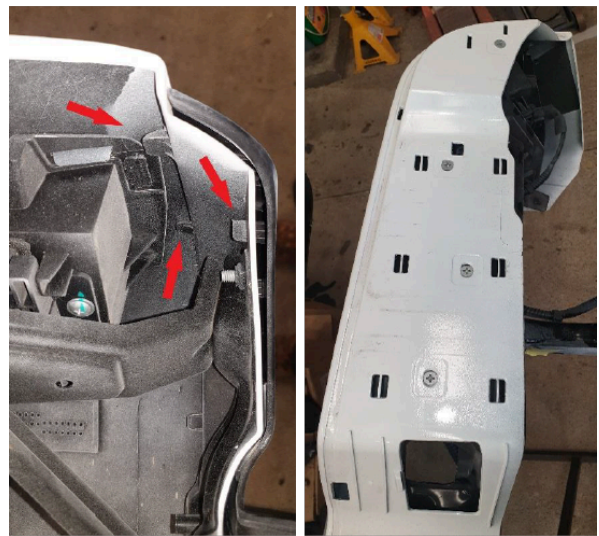
Step 1. Remove Bumper

- a. Disconnect wiring loom from the connector on PS Chassis.
- b. Loosen rear most M12 bolts on chassis and remove nuts.
- c. Remove forward most bolt from chassis.
- d. Repeat on opposite side.
- e. With help to support the bumper, remove the rear most bolts from the chassis and remove bumper. Discard all bolts.
- f. Set bumper aside for further dismantling.



Step 2. Remove Step Cover & Bumper Brackets

- a. Disconnect the reverse sensors and the plug from each number plate light.
- b. Release the remaining wiring loom from its fastening points leaving the lane assist sensor plugs attached.
- c. Remove the number plate lights from the outside by releasing the inner plastic loop tab from behind.
- d. Remove 6x 10mm head bolts from the underside of the bumper & 2x 10mm head bolts from the number plate area.
- e. Starting at the outer most corner of the bumper, pull the black plastic step cover upward whilst releasing the clips from inside.
- f. Using a trim puller or similar gently pry the black step cover until the centre is reached. Repeat on opposite side.
- g. Set the step cover aside.
- h. Remove 15x M6 Philips head screws from top face of bumper skin attaching to steel bumper re-enforcement. Set aside.
- i. The plastic skin can now be separated from the steel bumper re-enforcement.
- j. Remove 2x 13mm head bolts fastening each of the bumper brackets. Discard brackets & bolts



Towbar Fitting Instructions



Step 3. Fit Towbar

- a. Mount the PS end plate to the chassis with the upper spacer between end plate and chassis. Insert 2x M12x 130 bolts & flat washers into the rear most holes. Loosely secure with nuts & washers on the outside. Insert 1x M12x 1.25x 45 bolt & washer into the forward captive thread.
- b. Insert the end plate doubler plate between the inner face of the recovery point tower and the outer face of the PS endplate. Loosely secure with the remaining M12x 130 bolts, washers & nuts.
- c. Mount the DS endplate to the chassis with 3x M12x 110 bolts & flat washers into rear most holes. Loosely secure with nuts & washers on the outside. Insert 1x M12x 1.25x 45 bolt & washer into the forward captive thread.



Towbar Fitting Instructions



Step 4. Fit Bumper Bar

- a. Mount the bumper steel reinforcement to the endplates using the M8x 20 bolts, washers & nuts. Align with the vehicle and tighten all bolts.
- b. Assemble bumper bar in reverse of **Step 2 (a-i)**.
- c. Use the 2x M6x 20 bolts, washers & nuts provided to fasten the bumper to the lower tab of the endplates.
- d. Re-connect the wiring loom to the connector on PS Chassis.
- e. Insert the ball mount and secure with pin & clip.
- f. Apply TAG Compliance plate to the inside of the DS door pillar.



Step 5. Apply Compliance Label

- a. Apply compliance label to driver's door A-pillar. Place spare compliance Label & fitting Instructions in the vehicle handbook.



Torque table for bolt tightening

Diameter	Pitch	Grade	Torque	Unit
M8	1.25	8.8	29	Nm
M10	1.25	8.8	57	Nm
M10	1.50	8.8	44	Nm
M12	1.25	8.8	101	Nm
M12	1.50	8.8	97	Nm
M12	1.75	8.8	77	Nm
M14	2.00	8.8	122	Nm
M16	2.00	8.8	190	Nm
Imperial Bolt Torque Settings				
3/8"	UNC	8	44.75	Nm

TAG Warranty Statement

SWD warrants your TAG Towbar for its full product life under the following conditions:

- You can show proof of purchase.
- The towbar has been correctly installed by a suitably qualified installer.
- The towbar has not been modified or abused in any way and has only been used for the intended purpose.
- The towbar was not fitted second hand to your vehicle.

The extent of this warranty includes materials and workmanship used in the manufacture of the towbar and is to the equivalent value of current, full replacement cost.

Nothing stated or implied in this warranty limits in any way, the statutory rights that you may have.

To make a claim visit the original installer in the first instance or, if you are unable to or are not satisfied with their help, then contact us direct by phone on 1300 669122 or visit www.swd.com.au