

# THERMACELL®

Turn it on.....  
Mosquitoes GONE!



## PRECAUTIONS

### KEEP OUT OF REACH OF CHILDREN AND PETS.

For outdoor use as an insect repellent only. Do not use indoors, in tents or any enclosed area. Do not touch the grill while the appliance is in use. The grill is hot while in use. Do not insert anything other than Thermacell mats into the appliance. Place appliance on a flat, stable surface with the grill facing upward. Do not cover with any material while in use.

Clean with a damp cloth only when the appliance is cool and inactive. Wash hands after use. Cartridge contains flammable, pressurized butane. Do not use near fire or flame. Protect the butane cartridges from sunlight. Do not expose them to temperatures above 50°C. Do not pierce, break or incinerate butane cartridges, even after use. Butane cartridges other than Thermacell cartridges will not work in this appliance. Seller will not be held responsible for damage, injury or poor performance caused by use of other butane cartridges or repellent mats.

## CAUTION

This pesticide is highly toxic to fish. Do not apply directly to water. Drift from treated areas may be hazardous to organisms in adjacent aquatic sites.

This pesticide poses a high risk to beneficial invertebrates (eg. honeybees). Do not disperse in an area where bees are foraging; or on plants likely to be visited by bees if the plant is in open flower or part bloom, or is likely to flower within 10 days following application.

## STORAGE AND DISPOSAL

Store in the closed, original container in a cool, dry place out of reach of children. Do not store in direct sunlight. Store unused mats in original packaging in a cool, dry place inaccessible to children and pets. Store butane cartridges in a cool, dry place away from sources of heat. Do not reuse empty envelopes. Wrap used mats and butane cartridges and place in garbage. Do not incinerate cartridges.

## SAFETY DIRECTIONS

Wash hands after use.

## FIRST AID

If poisoning occurs, contact a doctor or Poisons Information Centre (Phone Australia 13 11 26; New Zealand 0800 764766). Take appliance, label or product name and APVMA or HSNO Approval Number with you when seeking medical attention. Harmful if swallowed.

For further product information contact Mayo Hardware 1300 360 211

APVMA Approval No.: 54539/102835

Mayo Hardware  
71 Apollo Drive Albany 0632  
Tel 09 415 6217  
HSNO Approval No.: HSR000937  
Refer to [www.epa.govt.nz](http://www.epa.govt.nz) for controls.  
HSNO Classifications: 2.1.1A, 6.1E, 9.1A, 9.4C  
WARNING: FLAMMABLE AEROSOL,  
ECOTOXIC

Batch/Date of Manufacture located on each component in the box.

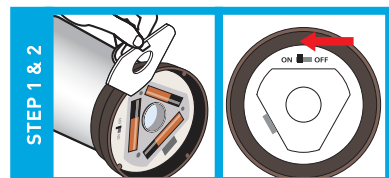
## DIRECTIONS FOR USE

### USEFUL TIPS:

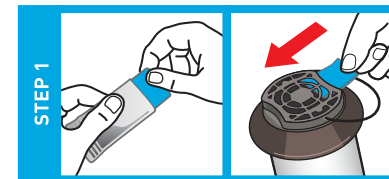
- Allow 10 to 30 minutes, depending upon the size of the area, for product to take effect.
- This product works well in outdoor areas where there is minimal air movement, such as outdoor campsites.
- Use one lantern per each 21m<sup>2</sup>.
- Each mat lasts a maximum of 4 hours and each THERMACELL® butane cartridge lasts a maximum of 12 hours.
- Provides a maximum of 4 hours repellency per mat.
- Mats turn from pale blue to white when repellent has been exhausted.
- Some visible vapor will appear during use; this is normal.
- Lantern provides diffused light and repels mosquitoes, black flies, flying insects and bugs.
- Batteries power the light; heat from the THERMACELL® cartridge activates the repellent mat and provides mosquito repellency.
- LED lights can be used with or without the mosquito repellent.

**Use Restrictions:** Only for outdoor use as an insect repellent. Do not use indoors, in tents or in any enclosed area. Do not insert anything other than THERMACELL® mats into the lantern. Cover or remove all exposed food. Do not leave lantern unattended or use in windy conditions. Do not expose lantern or mats to rain. Place lantern on a flat, stable surface with the grill facing upward. Do not touch the grill; it will be hot after a couple of minutes. Clean with a damp cloth only when the lantern is cool and inactive. Butane cartridges other than THERMACELL® cartridges will not work in this lantern.

### TO USE THE LIGHT:

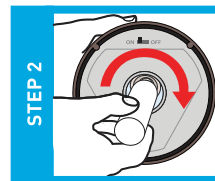


1. Open the battery compartment and insert 3 AAA batteries. Ensure the batteries are properly aligned with the +/- signs. Close the battery compartment.
2. To use the light, slide the ON/OFF switch to the ON position. To turn the light off slide the ON/OFF switch to the OFF position.
3. The light may be used with the mosquito repellent or independently.

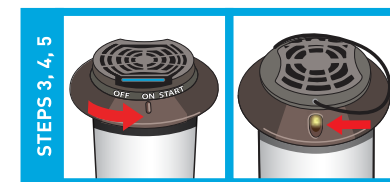


### TO USE THE MOSQUITO REPELLENT:

1. Remove one THERMACELL® Mosquito Repellent mat from wrapper.  
Insert the mat under the grill at the top of the lantern.



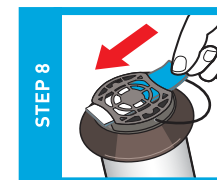
2. Remove butane cartridge cap and screw cartridge into lantern. Turn cartridge clockwise until it stops. Make sure the cartridge is fully inserted.
3. To activate the mosquito repellent, grasp the lantern collar and rotate collar to the right until the indicator line points to "ON". The gas will begin to flow.



4. Wait approximately 5 to 10 seconds then rotate lantern collar further to the right until the indicator line points to "START". You should hear a clicking noise.
5. To verify that the mosquito repellent is activated look at the circular view hole located on the lantern collar to the right of the "START" button. An orange light will glow. If there is no orange light, rotate indicator line back to the "ON" position and repeat rotation to the "START" position two to three times in rapid succession.

6. If there is still no orange light visible in the view hole, make sure the cartridge is completely screwed into place. Also check the amount of fuel in the cartridge. If cartridge is empty or near empty, remove cartridge and replace with a new THERMACELL® cartridge. Then repeat steps 3-5.

7. When finished using the lantern, rotate the lantern collar to the left until the indicator line is in the "OFF" position. Allow lantern to cool completely before storing.



8. To replace a used mat, make sure indicator line is in the "OFF" position and allow lantern grill to cool. Push the used mat out by inserting a fresh mat.

**Troubleshooting:** If lantern does not turn on, verify that there is no orange glow in the view hole. If there is no orange glow, rotate indicator line back to the "ON" position and repeat rotation to the "START" position two to three times in rapid succession. If there is still no orange glow visible in the view hole, make sure the cartridge is completely screwed into place. Also check the amount of fuel in the cartridge. If cartridge is empty or near empty, remove cartridge and replace with a new THERMACELL® cartridge. Then repeat step #3.

# THERMACELL®