

Wireless 7" Monitor DVR with Reverse Camera

Operation Manual

DVR-7W



Contents

Contents/Preface	1
Key/ Remote Instruction	2
Features/ Technical Specifications	3
Troubleshooting / OSD MENU Operation	4~8
Wiring Diagram	9
Bracket Installation	10

Preface

To ensure long-term trouble-free service of the products, please read this manual carefully before using the product.

Notes:

1. Do not try to open the covers. It is a high precision product. Please close the power in time if anomalies.
2. Do not use organic solvent clear the covers, to avoid it peel off painting.
3. Do not enforce to the lead wire., to avoid damage or poor connect.
4. Protect the product from fall down and shock.
5. Please wiring as diagram strictly, if wiring wrong will lead product can't work and even damage vehicle electrical system.
6. Do not use any affect operation of driving.
7. Do not let the product working at higher or lower than the suitable temperature of machine.

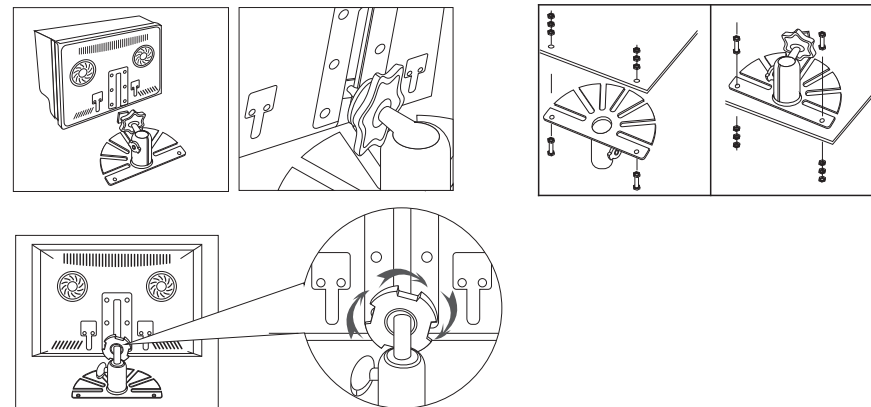
Copyright protection:

This manual is the intellectual property of our company.
In order to continuously improve the products,
We reserve the right to change the specifications without prior notice.

Bracket Installation

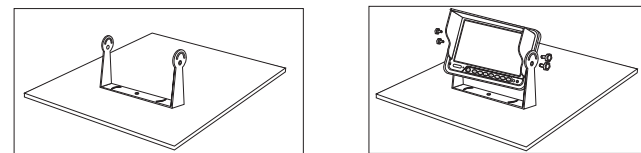
1. Plastic/Metal Bracket Installation

- 1) Firstly fixed the bracket via the screws, the screws of the top need lock to nut of under.
- 2) Secondly put the metal buckle piece on the top of the fan-shaped bracket into the notch at the back of the monitor.
- 3) Move the bracket to the proper location.
- 4) Screw down the nut of bracket, until the monitor fastening.

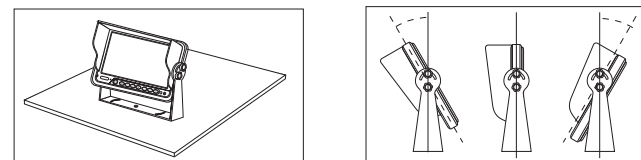


2. U-Bracket Installation (optional)

- 1) Use the screw fixed the U-bracket. Put the monitor into the bracket, adjust angle and locking it.



- 2) Finished the installation. Adjust the angle forward 30° to backward 30° . User can adjust a suitable angle by oneself.



Wiring Diagram

Reversing Display:

When the green wire is activated, the monitor automatically switches to CAM1

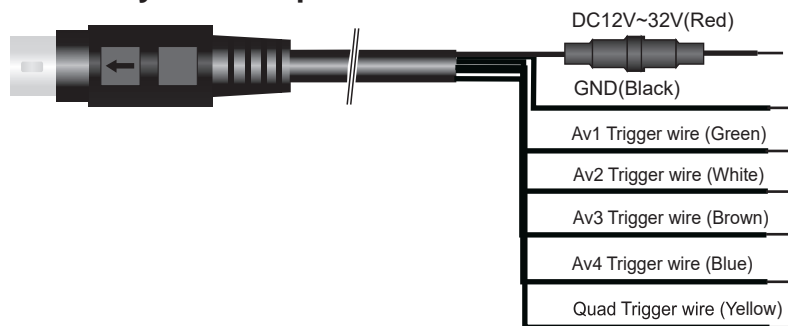
When the white wire is connected to the positive wire of the left turn light, the monitor automatically switches to CAM2(left side camera) when the left turn indicator is activated.

When the blue wire is connected to the positive wire of the right turn light, the monitor automatically switches to CAM3 (right side camera) when the right turn indicator is activated.

When the brown wire is connected to the positive wire of back-up light, the monitor automatically switches to CAM4 (back up camera) when the backup light is turned on. The distancing grid will also be displayed.

When the yellow wire is connected to the positive wire, the monitor automatically switches to quad or split display. Connection depends on the application request.

Four way video inputs:

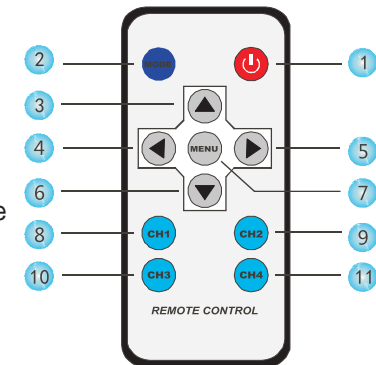


Keystroke Instruction



Remote Instruction

- 1 Power On
- 2 Mode
- 3 Analog Increase
- 4 Volume Down
- 5 Volume Up
- 6 Analog Decrease
- 7 Menu
- 8 CH 1 (Video)
- 9 CH 2 (Video)
- 10 CH 3 (Video)
- 11 CH 4 (Video)



Features

1. TFT LCD monitor with wide angle view and high resolution display.
2. NORMAL, MIRROR, FLIP and MIR FLIP viewing available.
3. Split mode, auto scan mode and single display mode available.
4. Auto pairing: Auto pairing happens when camera is activated.
5. Support 4channel composite and single channel recording in AVI signal format.
6. Auto dim function available.
7. Full-function remote control.
8. 4 wireless camera input.
9. Multiple video formats: PAL / NTSC.
10. Wide voltage input: 10 -32V.
11. On-board speaker (Optional).
12. Auto switch to the working channel when trigger is activated

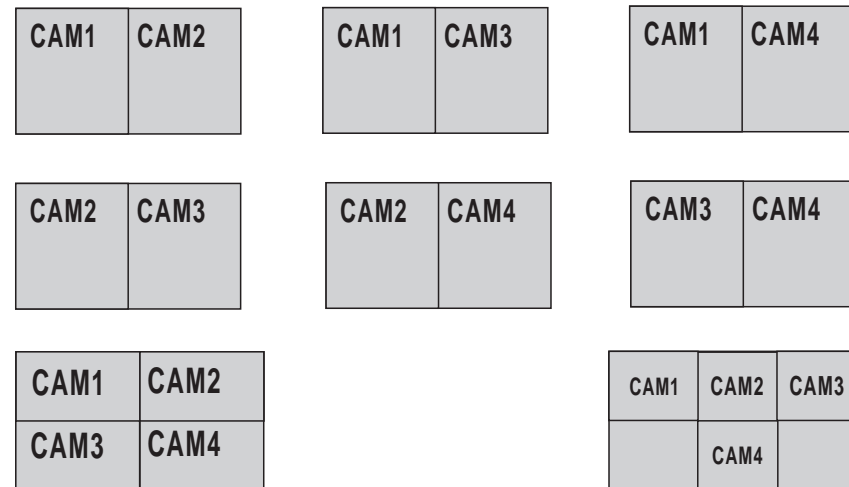
Technical Specifications

LCD size	7"
Resolution	1024 x 600
Contrast	500:1
Brightness	400 cd/m ²
Viewing Angle	U: 50 / D:70, R/L: 70
Aspect Ratio	16:9
Channel	4 channels
Operating Frequency	2400 - 2483.5 MHz
Receiving Sensitivity	-89 dBm
Decompression Form	MPEG4
Transmit Output Power	17 dBm
Modulation	2.4G FSK/GFSK
Time Delay	120ms
Transmitting Distance	30 - 120 M
IP	Ip69
System Format	PAL / NTSC
Power Supply	DC 12V - 48V
Power Consumption	Max. 6W
Loudspeaker	1.5W/8Ω
Operating temperature	-20~+70°C,RH90%
Storage temperature	-30~+80°C,RH90%

Menu

- 3) **COLOR-SYS:** Pres ◀ or ▶ to select COLOR-SYS, Press **AV** to enter, Press ◀ or ▶ to select NTSC/PAL.
- 4) **AUTO-DIM:** Press ◀ or ▶ to select AUTO-DIM. Press **AV** to enter, and then press ◀ or ▶ to select ON/OFF. When it is on, the monitor will automatically turn darker when it is placed in dark environment for 5s.
- 5) **P-Line:** press ◀ or ▶ to select ELETRONIC DISTANCE LABEL. Press AV to enter, and press ◀ or ▶ to select ON/OFF, to open or close the electronic distance label. When it is on, the electronic distance label will be displayed in Back channel.
- 6) **DELAYTIME:** 1- 20S, with the step time of 1s.

Display Mode



Menu

(4) Cam-Setup

Press ◀ or ▶ to select CAM-SETUP, and press AV to select

Press ◀ or ▶ to select CAM1/CAM2/CAM3/CAM4/SCANTIME, and the press AV to enter the setting accordingly. When the icons turn red, press ◀ or ▶ on menu for selection decreasing or adding. Press M to exit the menu. At the submenu, press M return to main menu.

If the channel is turned OFF, image of the corresponding camera will not be shown in AUTOSCAN display mode.

Setting scale of SCANTIME is 5 - 45S, with the step time of 5s.



(5) System

Press ◀ or ▶ to select SYSTEM, Press AV to enter



1) **TIME** Press ◀ or ▶ to select TIME, Press AV to set. Press ◀ or ▶ for selection decreasing or adding. Press AV to continue the setting when finishing the previous operation.

2) **LANGUAGE:** Press ◀ or ▶ to select language, press AV to set. Chinese; English; French; German; Italian; Spanish; Portuguese; Russian; Korean; Finnish; Dutch

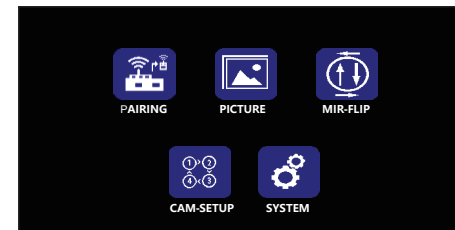
Troubleshooting

The symptoms described below do not necessarily mean a failure within the display. Please check the following items before you initiate request for repair.

Symptoms	Possible Causes/Solutions
No picture, no sound	Improper connection of automobile adapter. Use of unauthorized power supply. Power switch is on OFF position.
No signal	Check whether the camera has power supply. Pair the monitor and the camera again.
No sound	Check whether the sound volume is turned off or set too low.
Dark picture	Check whether brightness and contrast are adjusted correctly.
No color	Adjust the HUE settings.

Menu

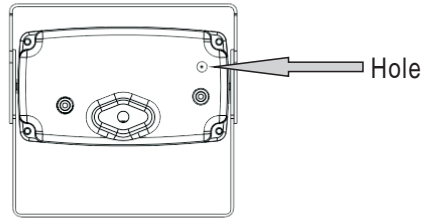
- MENU is allowed for operation under single image mode, not under quad view.
- Press M to display the following options and settings:
 1. Pairing
 2. Picture
 3. Mir - flip
 4. Cam setup
 5. System



Menu

(1) Pairing

Press ◀ or ▶ to select PAIRING, then press **AV** to enter.



Auto pairing:

1. Choose the channel that needs to be set up, and the monitor display the message "PAIRING START 50" and a counter that counts down 50s.
2. Within the countdown, power the camera.
3. The monitor and cameras will synchronize themselves with each other after the camera is powered for 5s.
For successful auto pairing, the picture appears. If pairing is unsuccessful, the monitor displays the message "No Signal". Repeat the pairing procedure.

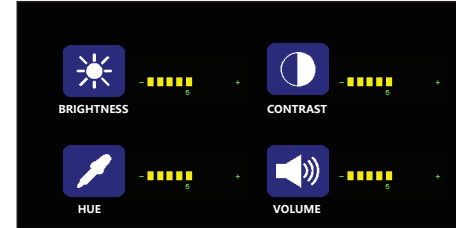
Manually pairing:

1. Choose the channel that needs to be set up, and the monitor display the message "PAIRING START 50" and a counter that counts down 50s.
2. Press the pairing button on the power-on camera.
3. The monitor and cameras will synchronize themselves with each other.
For successful auto pairing, the picture appears. If pairing is unsuccessful, the monitor displays the message "No Signal". Repeat the pairing procedure.

Menu

(2) Picture

Press ◀ or ▶ to select PICTURE and press **AV** to enter the submenu.



Press ◀ or ▶ to select BRIGHTNESS / CONTRAST / HUE / VOLUME, and then press **AV** to enter the setting accordingly. When the icons turn red, press ◀ or ▶ on menu for selection decreasing or adding. Press **M** to exit the menu. At the submenu, press **M** return to main menu.

(3) MIR-FLIP

Press ◀ or ▶ to select MIRFLIP, and press **AV** to select



Press ◀ or ▶ to select NORMAL / MIRROR / MIRFLIP / FLIP. Press **M** return to main menu